



VISIT

whitecliffscountry

DOVER • DEAL • SANDWICH

FREE VISITOR GUIDE 2016



"visit the world-famous white cliffs of Dover where you can enjoy panoramic views and stunning landscape. white cliffs country has a fantastic coastline with unique heritage and is waiting to be discovered by you."

Gareth Wiltshire
National Trust

welcome



Welcome to White Cliffs Country, a unique place where coast meets country, beauty meets history and England meets the Continent.

The iconic White Cliffs and our beautiful coast and countryside offer spectacular walking, sailing, cycling and sightseeing as well as white knuckle RIB rides, seal spotting and even the opportunity to feed a tiger.

The rich heritage of the area is awe-inspiring with an amazing selection of diverse museums and a busy season of re-enactments bringing history alive as you have never seen it before.

Plus with our towns and villages overflowing with character containing unique shops, theatres, restaurants and places to stay makes this a destination not to be missed.

Come for a day or stay for a week and have an experience to remember.

TOP 10 must see and do

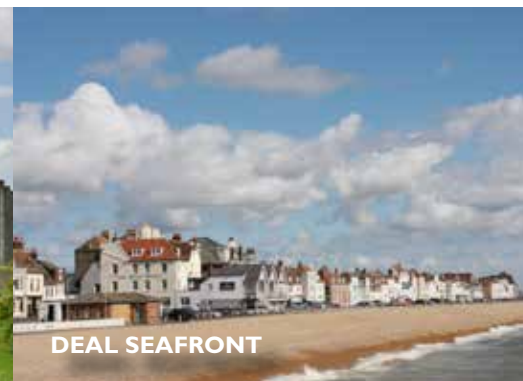
- 1 WHITE CLIFFS
- 2 HISTORY & HERITAGE
- 3 STUNNING COASTLINE
- 4 COUNTRYSIDE
- 5 HIDDEN GEMS
- 6 WALKING & CYCLING
- 7 COASTAL AND OUTDOOR ACTIVITIES
- 8 GARDENS & COUNTRY PARKS
- 9 FOOD & DRINK
- 10 FESTIVALS & REGATTAS



WHITE CLIFFS, ST MARGARET'S



DOVER CASTLE



DEAL SEAFRONT



VIEW OF CASTLE FROM THE DOWNS



GRAND SHAFT, WESTERN HEIGHTS



RIVER WALK, SANDWICH



DOVER SEA SPORTS CENTRE



GOODNESTONE PARK



FOOD AND DRINK

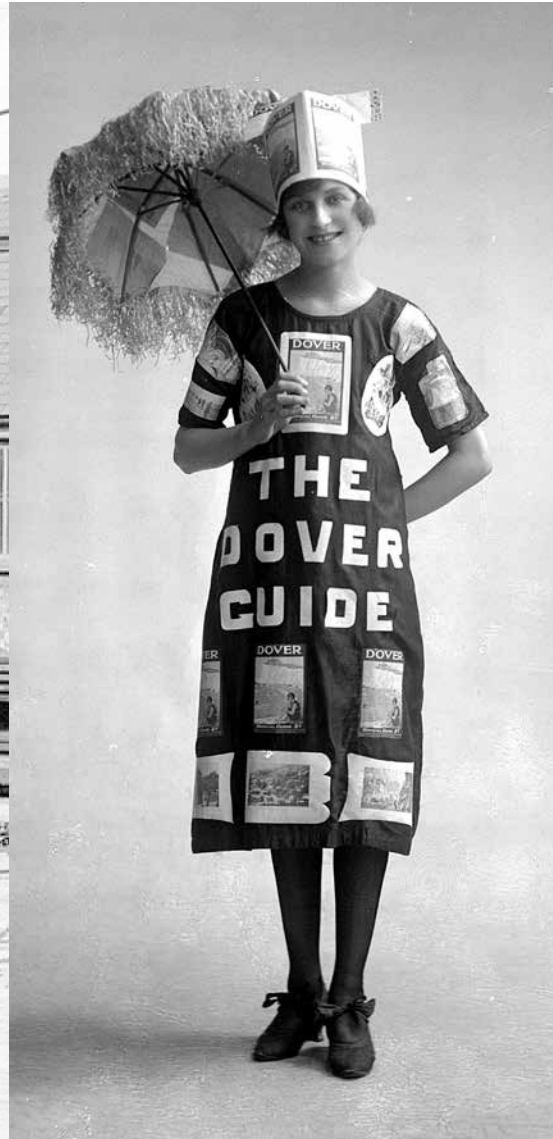


UP ON THE DOWNS FESTIVAL

DID YOU KNOW?



Many early Victorian taxidermy works were made by those who had never seen the animal when it was alive so on receiving the skin of a strange creature they thought all the wrinkles needed filling out - creating some very oversized, bloated creatures! The polar bear at Dover Museum has no such problems!



Did you know? Shakespeare's theatre company the 'King's Men' visited Dover in 1605, during the time he was writing "King Lear". Shakespeare Cliff owes its name to Act IV Scene I of that play.

Did you know? In 1880 work had begun to create the Channel Tunnel, but 2 years' later the Government put a halt to work as it was thought the Tunnel could compromise National Security. The Channel Tunnel Company went on to discover, in 1890, iron ore and coal in the area instead!

Did you know? Sir Joseph Lister died in Walmer aged 84. He was a pioneer of antiseptic surgery and, incidentally, the mouthwash Listerine was named after him too (presumably for his work and not for his breath)!

Did you know? The First World War poet, Rupert Brooke, (described by Yeats as the "handsomest young man in all England") completed his famous poem "The Soldier" whilst in Walmer Castle at the request of the then Prime Minister Herbert Asquith's daughter (incidentally, the grandmother of actress Helena Bonham Carter) in January 1915.

excite the senses

"Every day is a pleasure when sharing the jaw dropping beauty of the truly iconic white cliffs of Dover from when the sun rises to when the sun sets."

James Salmon - Dover Sea Safari



Looking for an action-packed stay in White Cliffs Country? Take a trip to **Wingham Wildlife Park** where you can Meet the Tigers under the watchful eye of one of their keepers.

Take a journey into the past on a guided tour of **Fan Bay Deep Shelter** in the White Cliffs of Dover. Recently opened to the public, the tunnels were constructed in 1940/1 as accommodation for the gun battery above. Follow your guide deep into the cliffs where the 125 steps take you in and out of the shelter 70 feet underground. The tunnels are unlit so the only light will come from head torches.

For an exciting range of activities and courses take to the water at **Dover Sea Sports Centre** or take advantage of our wonderful coastline on an exhilarating tour on an RIB speed boat with **Dover Sea Safari**.

For spooky goings on during Halloween visit **Dover Castle** on one of their After Dark events or for younger children the Halloween Train of Terror at **East Kent Railway** – great fun for all the family!



fairs and festivals



"Deal Festival's irresistible and extensive programme is a cultural feast and an event not to be missed in the arts calendar."

Alison Balsom
President of Deal Festival

There are plenty of things to see and do in White Cliffs Country with a packed programme of events from colourful carnivals and regattas to historic re-enactments.

Visit the medieval town of Sandwich when it goes 'French' for **Le Weekend** with an authentic Normandy market, classic cars and Can Can dancing or during the popular **Sandwich Festival**. This 3 day festival has an Italian food market, street stalls and music.

See international and national artists at various venues across Dover, Deal and Sandwich during the two week **Deal Festival of Music and the Arts** showcasing everything from street music to opera.

With a packed programme of events including live music, firework displays and a colourful carnival, visit Deal during the popular **Carnival and Regatta Week**.

Come along and listen to one of the concerts held at the **Deal Memorial Bandstand**, located at Walmer Green, on Sunday afternoons throughout the summer.

Get your walking boots on for the **White Cliffs Walking Festival**. This popular annual event, spread over seven days, has everything from short walks exploring the history of our towns to longer countryside walks.

For a great day out for all the family there's the **Port of Dover Community Regatta** - a fantastic festival of fun on land and sea.

View the **Western Heights** during one of the **Open Weekends** when the Drop Redoubt and Grand Shaft will be open to visitors.

Up On The Downs has their **Big Summer Festival** with loads of events for all the family, and look out for regular events held throughout the year by the **White Cliffs Countryside Partnership** from walks, to exhibitions and workshops.

EVENTS 2016

MARCH

DOVER FILM FESTIVAL

Unique films, recording the events and lives of the people of Dover.

MAY

SANDWICH FOOD FAYRE

Two day food fayre in the heart of historic Sandwich town with stalls focused on quality local products. The event celebrates the sandwich itself, named after the Fourth Earl of Sandwich in 1762, so come to Sandwich and enjoy a quality sandwich in Sandwich!

WALMER BROCANTE

Antique and Collectables Fair on Walmer Green held on May Bank Holiday weekend.



www.whitecliffscountry.org.uk

JUNE

LE WEEKEND

Two day festival in Sandwich including an authentic Normandy market, food stalls, music, classic cars and Can Can dancing.

WESTERN HEIGHTS OPEN WEEKEND

View the Western Heights during one of the Open Weekends when the Drop Redoubt, one of the two forts on the Western Heights and the Grand Shaft will be open to visitors.

GOODNESTONE PARK GARDENS

Beautiful gardens near Sandwich, with connections to Jane Austen. Enjoy lively music events and performances held in the gardens.



10



JULY

DEAL FESTIVAL OF MUSIC AND THE ARTS

International and national artists perform at venues in Dover; Deal and Sandwich at the annual popular two week festival showcasing everything from street music to opera and local art.

SANDWICH FOLK & ALE FESTIVAL

Annual festival with music and dancing in pubs and streets of Sandwich. Range of folk musical styles with an outdoor stage on the Guildhall Forecourt.

PORT OF DOVER COMMUNITY REGATTA

A fantastic festival of family fun on land and sea!

DEAL CARNIVAL AND REGATTA

Considered the South East's oldest and finest carnival and regatta. The packed programme includes live music, firework displays, a rowing regatta, culminating with a colourful carnival.

UP ON THE DOWNS BIG SUMMER FESTIVAL

Fortnight of fun activities celebrating our local countryside and heritage.

Events are subject to change,
for more detailed information
log on to the What's On page at
www.whitecliffscountry.org.uk.



AUGUST

SANDWICH FESTIVAL

Popular annual event with street stalls, Italian food market, street music and classic car meets.

WALMER PICNIC ON THE GREEN

Community picnic on Walmer Green with stalls.

WHITE CLIFFS WALKING FESTIVAL

Huge variety of walks to suit all abilities and interests. Whether your interests cover history or geocaching or flora and fauna, the festival has a walk for you.

SEPTEMBER

DEAL BRADERIE

Open air antiques and memorabilia fayre held through the town.

NOVEMBER

DOVER, DEAL AND SANDWICH CHRISTMAS LIGHTS

Christmas carnivals, parades and lights switched on across the district.

ALL YEAR ROUND

WHITE CLIFFS COUNTRYSIDE PARTNERSHIP

The WCCP hold regular events for the whole family throughout the year; from walks to exhibitions and workshops. See website for more details.

11

outdoors

Nature lovers can combine a leisurely **boat ride** with a chance to see an abundance of bird and marine life with **seal spotting** trips from Dover and Sandwich – you are almost guaranteed a great sighting of these fascinating creatures all year round.

Walk along any of our many beaches and take time to go **rock-pooling** or just be amazed by an interesting stone or shell.

Bird life thrives in this diverse landscape – listen for the call of the terns and the oyster catcher. The egret has become a common sight on our marshes and buzzards can be seen catching the wind above our woodland. **Sandwich Bird Observatory** holds open days and talks.

The Downs is a wonderful habitat for many rare chalk grassland flora and fauna with orchids and rare butterflies. This area is carefully managed to protect and preserve it and you will see Konik ponies and Dexter cattle grazing quietly on the hills, but also watch out for wild events.
www.uponthedowns.org.uk

Discover more and be amazed!

www.whitecliffscountry.org.uk



"From barn owls to hares, from orchids to seals the diversity of wildlife in this corner of Kent is astonishing."

Richard Taylor-Jones
Cameraman/Director/Photographer



by bicycle



"We are blessed with lovely countryside to cycle through for all abilities. Look us up on Facebook for details of our organised ride outs."

Andy Croucher
Locks of Sandwich Cycles

With a huge amount of cycle routes bring your own bike or hire one and take advantage of our quiet country lanes, designated cycle paths and coastal tracks and discover White Cliffs Country on two wheels!

Whatever your ability take life at a slower pace and pedal one of the many waymarked routes:

- **The Sandwich Way - Route 15,**
- **Cathedral to Coast - circular ride on Regional Routes 16 and 17,**
- **Cliffs and Castle Route - National Route 1.**

For great views of open countryside, woods and hedgerows follow the **Skylark Trail** or explore the beautiful lower slopes of the North Downs between Deal and Shepardswell on the **Miner's Way Cycle Trail**.

If you want to hire a bike in White Cliffs Country, there are a number of cycle hire shops to choose from - for more information visit:

www.whitecliffscountry.org.uk

wonderful walking

A must for all walkers is a **cliff top walk** along the iconic White Cliffs of Dover to **St Margaret's**. But with stunning countryside White Cliffs Country also has miles of walking trails to suit all ages and abilities. Put your boots on and explore miles of marked walking and themed trails: • **Frontline Britain Trail** • **Cliff Top Walks** • **Town and Village Walks** • **Samphire Hoe** • **Miner's Way** • **Stour Valley Way** • **The North Downs Way** • **Saxon Shore Way** • **Dover's brand new Bluebird Heritage Trail**.

Experience our wonderful coastline and countryside on one of our many **guided walks** held throughout the year - you're sure to find one that suits you!

Discover the history and heritage of our unique towns and villages by following the **Historic Town and Village Trails**. Discovering churches, buildings of interest and ancient hostelrys with a wealth of history along the way.

Don't miss the **White Cliffs Walking Festival** in August with a variety of walks to suit all abilities and interests.

For further information pick up leaflets and maps from the Visitor Information Centres or visit our website.

www.whitecliffscountry.org.uk



eat&drink

"Experience a quintessential English tea or try one of the unique home made cakes in a quirky, friendly environment within the medieval town of Sandwich."

Sally Roberts
Scrumalicious Cake Company & Delicious Café



Kent's hop fields have made our **local beer** famous for hundreds of years and **Kentish apples** make an excellent cider. You will be able to enjoy a pint or two in our many traditional or boutique **pubs** and a selection of **micro-breweries** across the district. If you prefer a drop of wine our Kentish vineyards produce some of the best.

Indulge in the quintessentially English pursuit of taking **tea**! Some of us love the whole works... dainty bone china cups and saucers, vintage teapots, a variety of loose-leaf tea with a tea strainer, majestic cake stands and napkins. Some love cheerful bunting, floral embroidered table cloths, pretty flowers in vintage jugs on the table. Sophistication...vintage...classic... whatever you prefer, White Cliffs Country offers you some of the best places!

For that special lunch or evening meal from **traditional English fare** through to continental and world cuisine you will always find your favourite menu as well as having something new to try.



get cooking



"All our courses include tastings and finish with a dinner at the chef's table, so the participants will not only taste the fruits of their labours but will also be shown how it's done by the masters!"

Gavin Oakley
Walletts Court



White Cliffs Country is a **great place to eat** out with a wide variety of places to choose, from restaurants and gastro pubs to bistros and cafes, many offering **locally sourced produce**. But how about getting involved in some **cookery classes** whilst here?

Try a cookery class at **Chequers Kitchen** in Deal. They have a wide range of classes and workshops from artisan bread making to a fish masterclass provided by their in-house team or a visiting expert.

Or why not cook alongside an ex-Michelin starred chef in the kitchens at **Wallett's Court Country House Hotel**, a beautiful manor house located in a wonderful setting. The cookery masterclasses are ideal for both the novice and more experienced cook and include workshop, tasting sessions and a four course dinner at the **Chef's Table**.

shopping

Whatever your taste White Cliffs Country has shopping experiences to suit. From a superb **outlet store** on the edge of Dover Marina to unique seaside town shopping offering a range of independent and national chain stores interspersed with **antique and collectable shops** and **art galleries** for that very special gift or memento from your visit.

Then in Britain's oldest medieval town of Sandwich you will find a wealth of independent **quirky shops** including delis, unique clothes shops as well as a wealth of cafes, restaurants and pubs.

Enjoy the buzz of bustling **street markets** or visit one of the many **farmers' markets** in White Cliffs Country. Many offer local produce from homemade chutneys and jam, fresh vegetables and homemade chocolates to craft stalls, handmade jewellery and second hand books.

"We have been trading in Deal since the last century and have a stall in the vibrant Saturday market. It was no surprise that Deal High Street won the Telegraph High Street of the Year Award."

Viv Ayton
Mummery & Fudger



castles&forts

"It's fantastic to work at Dover Castle, we get to share its amazing history with visitors from all over the world. It's a great day out!"

Kirsty Holden
Dover Castle Property Supervisor



Dover Castle. Britain's spirit of resistance to unwanted invasion over the years is best symbolised by this magnificent castle. Built in the 1180's by King Henry II, it is located on top of the famous White Cliffs.

Deal Castle. For a fascinating day out on the Kent coast look no further. Built by the order of King Henry VIII it is one of the finest Tudor artillery castles in England.

Walmer Castle & Gardens. From Henry VIII's fort to residence of the Lord Warden. See the original Wellington boots. Explore the magnificent gardens.

Richborough Roman Fort. Impressive ruins of the Roman Township 43 AD. English Heritage holds reinactments and activity days throughout the year.

Western Heights. One of the most important and impressive fortifications in Britain. The Western Heights are a series of strong points linked by miles of ditches on the western hilltop above Dover.

amazing museums

Dover Museum is our flagship, with free family activity days throughout the year. Here you will also find the award winning **Bronze Age Boat Gallery** exhibiting the oldest known sea-going boat.

The Roman Painted House, on New Street, Dover is well worth a visit. Built about AD 200 it formed part of a large mansio or official hotel for travellers crossing the English Channel. Just outside town you will also find the **Dover Transport Museum** and **Crabble Corn Mill**.

Deal's museums reflect our maritime history. **The Timeball Tower** on the sea-front was built as part of a chain of semaphore stations. **South Foreland Lighthouse**, at St Margaret's, was also used for communications. Today, you can take a guided tour of the lighthouse or relax in Mrs Knott's tea room.

In Sandwich is the **Guildhall Museum** with many interesting local history exhibits and at the other end of the district is the new award winning **WING** at the **Battle of Britain Memorial** site at Capel-le-Ferne where you can experience the interactive displays and then relax in their café looking out to sea.

www.whitecliffscountry.org.uk



"Dover and its famous white cliffs are inextricably linked with this country's history, and the National Memorial to the Few at Capel-le-Ferne is just one of a number of great places to visit."

Richard Hunting CBE
Chairman, Battle of Britain Memorial Trust



relax&reflect



In White Cliffs Country we are proud to have a wonderfully varied selection of formal gardens. From the beautiful gardens at **Walmer Castle** and **Goodnestone Park** through to the exquisite **Secret Gardens of Sandwich**.

2016 is the 'Year of the English Garden'. Come and explore the many fabulous gardens in White Cliffs Country.

Discover also the fascinating and sustainable **Pines Garden** at St Margaret's where the organically managed six acre area has a lake, a sensory garden and sustainability trail for children, a grass labyrinth and organic kitchen gardens with over 40 different species of fruit and vegetables. And don't forget the wonderful tea room selling homemade produce – much of it grown in the gardens.

Don't think the district only has formal gardens where you can relax. Dover's public gardens at **Connaught Park** and the **Kearsney Parks** are relaxing places for families to enjoy picnics, feed the birds and let the children play. You can explore **Sapphire Hoe** and **Betteshanger Country Park** for walking, cycling, fishing and fossil hunting - **and all for free!**

Offering a different character and history why not spend some time reflecting and discovering a wealth of **churches** in White Cliffs Country.



"Follow in the footsteps of many famous faces and visit white cliffs country. This stunning location has been used in many TV and film series - come and see what inspired them." Shaun the Sheep

on location

© Walt Disney Studios



Important figures in the worlds of Art, Literature, History and Film have found White Cliffs Country irresistible.

The author Jane Austen was a regular visitor to **Goodnestone Park** when her brother lived on the Estate. Covering around 14 acres there are romantic woodland areas, an historic walled garden and spectacular pond and rockery. Immediately after staying here in 1796, Jane began writing her first novel, "Pride and Prejudice" – what inspiration will you get from a visit?

St Margaret's, on the White Cliffs, has its own micro climate – maybe this is why famous figures such as Noel Coward and Ian Fleming chose to live here!

In New Street, **Sandwich**, you can see, or even stay in, the house where Thomas Paine, one of the Founding Fathers of the United States, lived in the 1790's.

Film companies have found the landscape and historic buildings provide unique locations. The next series of "The Tunnel", Disney production of "Into the Woods", "Little Dorrit" and "The Other Boleyn Girl" to mention but a few.

great golf



"Whether an amateur or professional, white cliffs country has some fantastic courses offering a challenging round of golf for everyone."

Jacob Dainton
Local Golfer



Our world-renowned golf courses boast a history of international competitions. In 1964 author Ian Fleming was nominated President-Elect of the Royal St George's – which he thinly disguised as the Royal St Mark's when James Bond and his adversary Goldfinger had their famous contest.

There are a host of courses to choose from in White Cliffs Country. With excellent practice facilities, the **Royal Cinque Ports Golf Club** is said to be one of the finest Championship link golf courses in the British Isles.

Situated on the famous White Cliffs with a fantastic 18-hole course is **Walmer and Kingsdown Golf Club**.

Royal St George's Golf Club hosted the 140th Open championship in 2011 and their challenging course offers stunning sea views.

Prince's Golf Club is a classic Championship links golf club, is a former venue of the Open and now boasts a superb restaurant.

KIDS

large and small

There are loads of great things to do with the kids in White Cliffs Country from swimming to visiting the local wildlife park. If it's a free activity you are looking for we cater for that too with skate parks and play areas and **Walmer Paddling Pool** for the under 10's plus a crazy golf course on the beach. If you are looking for a more structured activity **White Cliffs Countryside Partnership** has a very full list of events that happen all year round for all the family!

Swimming is great fun for the whole family and you can follow in the footsteps of Matthew Webb who, in 1875, started the long tradition of Channel Swimming and take a dip from one of the many beaches in the area. In chillier weather there are indoor pools at Dover and Deal.

In Pencester Gardens in Dover, Victoria Park in Deal and The Butts in Sandwich you will find **multi-purpose play areas** including state-of-the-art **skate parks** and modern, **safe play areas** for the little ones.

www.whitecliffscountry.org.uk

On 24 August 1875, Webb dived into the sea off Admiralty Pier in Dover. After 21 hours and 45 minutes, he came ashore near Calais—completing the first successful cross-channel swim.

Matthew Webb



daysOUT



Visit fairy tale castles and imposing fortresses by the sea; excite your senses with tigers and RIB rides. For a different perspective, sail around the harbour or take a boat trip to see the seals or travel back in time on an historic railway. There's fun to have at our parks, leisure centres, countryside and beaches.

Don't forget to check out the What's On section on our website for details of all the events.

www.whitecliffscountry.org.uk

Barnsole Vineyard
m: 07772 300511
www.barnsole.co.uk

Battle of Britain Memorial
t: 01303 249292
www.battleofbritainmemorial.org

Betteshanger Country Park
t: 07824 569181
www.betteshangercountrypark.co.uk

Coker Sea Fishing Charters
t: 01303 872329
www.cokerseafishing.com

Connaught Park
t: 01304 825569 (to book Tennis Courts)

Crabble Corn Mill
t: 01304 823292
www.ccmt.org.uk

Deal Castle
t: 01304 372762
www.english-heritage.org.uk/dealcastle

Deal Maritime & Local History Museum
www.dealmuseum.co.uk

Deal Pier
t: 01304 363815
www.dover.gov.uk

De Bradelei Wharf
t: 01304 226616
www.debradelei.com

Dover Castle
t: 01304 211067
www.english-heritage.org.uk/dovercastle

Dover Leisure Centre
t: 01304 201145
www.yourleisure.uk.com

**Dover Museum and
Bronze Age Boat Gallery**
t: 01304 201066
www.dovermuseum.co.uk

Dover Sea Safari
t: 01304 212880
www.doverseasafari.co.uk

Dover Sea Sports Centre
t: 01304 212880
www.doverseasports.co.uk

Dover Transport Museum
t: 01304 822409
www.dovertransportmuseum.org.uk

Dover White Cliffs Tours
t: 07971 301379 / 01303 271388
www.doverwhitecliffstours.com

East Kent Railway
t: 01304 832042
www.eastkentrailway.co.uk

Fan Bay Deep Shelter
t: 01304 207326
www.nationaltrust.org.uk/white-cliffs-dover

Fire Fox Fishing Charters
t: 01580 891198
www.firefox-fishingcharters.co.uk

Frontline Britain Trail
t: 01304 241806
www.whitecliffscountryside.org.uk

Gazen Salts Nature Reserve
t: 01304 617197

Goodnestone Park Gardens
t: 01304 840107
www.goodnestoneparkgardens.co.uk

Kearsney Abbey
t: 01304 824880

Kent Battle of Britain Museum
t: 01303 893140
www.kbobm.org

Little Farthingloe Farm
01304 212040

Richborough Roman Fort and Amphitheatre
t: 01304 612013
www.english-heritage.org.uk/richborough

Roman Painted House
t: 01304 203279
www.theromanpaintedhouse.co.uk



Royal Cinque Ports Yacht Club
t: 01304 206262
www.rcpyc.org.uk

Samphire Hoe
t: 01304 225649
www.samphirehoe.com

Sandwich Bay Bird Observatory
& Field Centre
t: 01304 617341
www.sbbot.org.uk

Sandwich Guildhall Museum
t: 01304 617197
www.sandwichtowncouncil.gov.uk

Sandwich Guildhall Tours
t: 01304 617197
www.sandwichtowncouncil.gov.uk

Sandwich River Bus
& Seal Spotting Trips
t: 07958 376183
www.sandwichriverbus.co.uk

South Foreland Lighthouse
t: 01304 852463
www.nationaltrust.org.uk/south-foreland-lighthouse/

St Peter's Church, Sandwich
www.stpeterschurch-sandwich.org.uk

The Pines Garden Tea Room & Museum
t: 01304 851737 (Garden)
01304 853173 (Tea Room)
www.pinesgarden.co.uk

The Secret Gardens of Sandwich
t: 01304 619919
www.the-secretgardens.co.uk

The Women's Land Army Museum
t: 01304 212040

Tides Leisure
& Indoor Tennis Centre
t: 01304 373399
www.yourleisure.uk.com

www.whitecliffscountry.org.uk

Timeball Tower Museum
t: 01304 362444
www.dealtimeball.co.uk

Tours of the Realm
t: 01303 863869 / 07595 769615
www.toursoftherealm.com

Walmer Castle & Gardens
t: 01304 364288
www.english-heritage.org.uk/walmercastle

Walmer Paddling Pool
t: 01304 373399
www.yourleisure.uk.com

Western Heights –
Local Nature Reserve
t: 01304 241806
www.whitecliffscountryside.org.uk

White Cliffs of Dover
t: 01304 202756
www.nationaltrust.org.uk/white-cliffs-dover

Whinless Down –
Local Nature Reserve
t: 01304 241806
www.whitecliffscountryside.org.uk

White Mill Rural Heritage Centre
t: 07900 531 284
www.whitemillheritagecentre.org.uk

Wingham Wildlife Park
t: 01227 720836
www.winghamwildlifepark.co.uk



STAY

finding the perfect place

Looking for a great day out, weekend break or UK holiday? Then escape to White Cliffs Country – we've got plenty of accommodation for you to choose from.

We have a wide selection of places to stay to satisfy every taste and budget. From cosy **self-catering cottages** to traditional **bed and breakfasts**, luxury **hotels** to **campsites** and even luxury **glamping!**

Quality is a very important part of the visitor experience and in recognition of this, all accommodation featured on our website has either a valid

inspection certificate carried out by a recognised external agency such as Visit England, the AA or those who have signed the White Cliffs Country Accommodation Charter.

Full accommodation details can be found on our website – www.whitecliffscountry.org.uk where you can also check out great ideas to make your visit even more special.

Further information

Find and reserve Guest Houses, Hotels and Historic Inns offering you a range of Town, Rural and Urban Areas.
www.stayindover.co.uk



DOVER

famous port

Dover town nestles under the shadow of its magnificent castle. The busy port boasts some wonderful hidden gems. **Dover Museum** and the **Bronze Age Boat Gallery**, sits behind the old Market Hall facade. Just up from Market Square is the **Roman Painted House** - a fine example of a Roman house in Britain.

If you need a break from history and fancy a bit of retail shopping then you must visit **De Bradelei Wharf**. It's right beside the **yacht marina** and close to the **seafront** with plenty of easy parking. There is also a **weekly Tuesday market** in the town offering a large range of items including local and French produce.

Once all the sight-seeing has built up your appetite, you could try one of the many restaurants, cafés and pubs in the town. Then walk it all off with a stroll along the newly refurbished **seafront promenade**. Here you can take in a panorama of the channel and see across to the coast of France - maybe tempting you on a day-trip on one of the regular ferries sailing to Calais. Don't forget your passport!



DEAL

seaside town

Walk to the modern award-winning restaurant at the end of Deal's 1000ft long **pier** and look back at a view that has hardly changed in over a century.

Deal's unspoilt **seafront**, full of dangerous smuggling haunts in the 1800's, is now a wonderful collection of colourful buildings complemented by the **fishing boats** hauled up onto the shingle beach giving it a unique vista.

A short stroll from the seafront you will find more examples of Deal's heritage in the **Timeball Tower Museum**, **Maritime Museum**, churches, houses and pubs and the narrow lanes around historic **Middle Street**. You're not the first to enjoy the charm of this town though - Lord Horatio Nelson himself entertained Lady Emma Hamilton at the Royal Hotel, where you can still dine and stay.

Why not also indulge yourself at the many wonderful **tea shops** or browse around **quaint gift shops**, **art galleries** and **antique emporiums**. There is also a vibrant **Saturday market**. It's all here in Deal.



SANDWICH

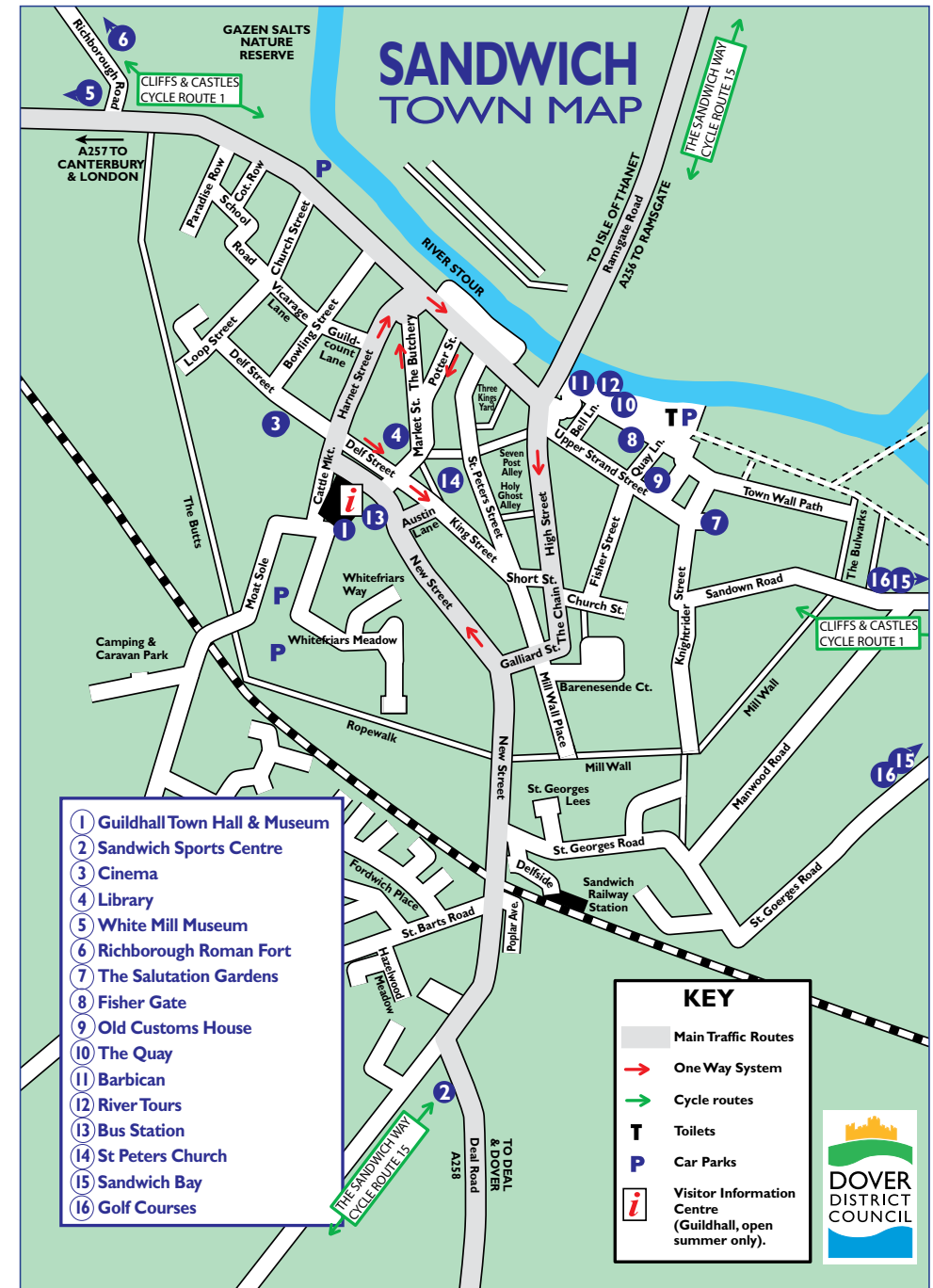
medieval town

Said to be “one of the most well preserved medieval towns in Britain”. Built in 1579, the **Guildhall** dominates the Market Square that was first a corn market and then a cattle market and still has a weekly **Thursday market** and a monthly **farmers’ market** held there.

It is well worth a wander down the newly refurbished quayside to **Fisher Gate** - dating from 1384 and one of the two surviving original medieval town gates - the other is the **Barbican** which later served as a toll gate for the bridge.

Food has always been associated with the town – in the 18th century the Earl of Sandwich is reputed to have devised the popular snack, and this is celebrated in the **annual food festival**. Good eating is also on the menu at the many pubs, restaurants and cafés found in the winding lanes of the town.

From **Sandwich Quay** nature lovers can combine a leisurely **boat ride** with a chance to see an **abundance of birds and seals**.



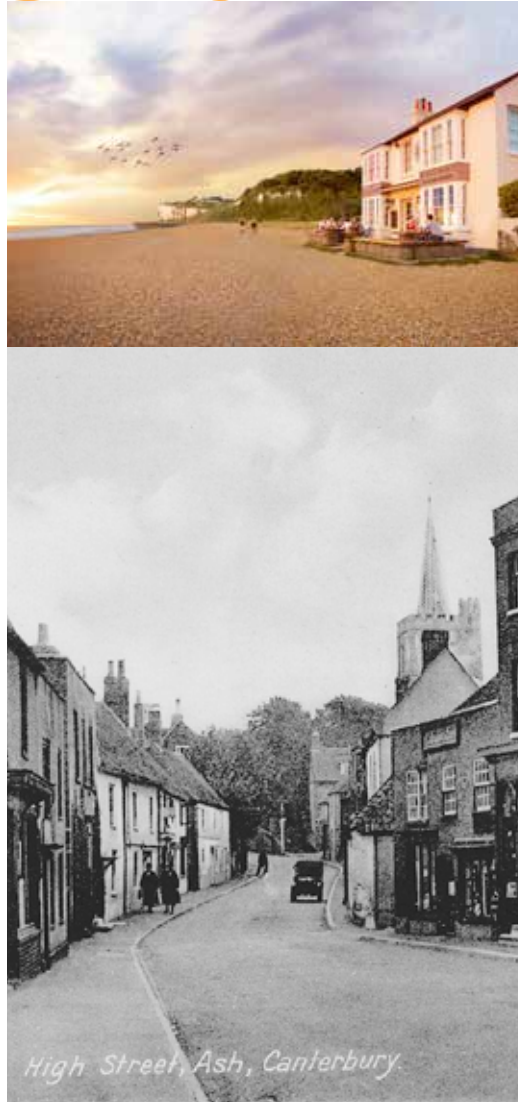
coastal and rural VILLAGES

White Cliffs Country has a unique collection of coastal and rural villages offering wonderful views and tranquil countryside.

Visit the beautiful and tranquil village of **St Margaret's**. Paddle in the sea at the bay or walk along the cliff tops to the South Foreland Lighthouse for breathtaking views and afternoon tea. Fleming's book, "Moonraker", is largely based in St Margaret's and nearby **Kingsdown**. Also overlooking the English Channel lays the village of **Capel-le-Ferne**, home to the Battle of Britain Memorial and the new visitor experience, the Wing. **Temple Ewell** is situated in the Dour valley and was first mentioned in a charter of c.772. In the village of **Shepherdswell** there are two fine old yew trees in the churchyard which are thought to be around 1,000 years' old. **Coldred** is one of the highest places in East Kent, nearly 400ft above sea level. **Barfreestone** is known for its village church with its Norman architecture and wonderful stone carvings. Other examples of Norman churches can be found at **Worth** and **Eastry**. **Goodnestone** has a connection to Jane Austen. **Wingham** has several half-timbered houses in the High Street which are over 500 years old and **Ash** retains 11 of its 12 original manor houses.

Find out more about the history of our villages by following a village trail or visit our website.

www.whitecliffscountry.org.uk



High Street, Ash, Canterbury



How to get here

Within easy access from London and the continent White Cliffs Country is easy to reach and perfect for a short or long break. The new **High Speed Rail Link** makes us only 67 minutes from London on the train! France is only 75 minutes on a Cross Channel ferry, the M20 and M2 roads link us to the city and the rest of the South East. Dover, Deal, Sandwich and our countryside are serviced by regular trains and buses both locally, as well as to and from London.

BY RAIL:

The High Speed Train operates from London St Pancras to Dover, Deal and Sandwich. South Eastern operates services from London Charing Cross and London Victoria to Dover, Deal and Sandwich.

National Rail Enquiries

03457 48 49 50

www.nationalrail.co.uk

Continental train connections can be made at Ebbsfleet and Ashford International.

Eurostar 03432 186 186

BY COACH:

National Express operates a regular direct link from London to Dover and Deal.

For times, fares and information:

National Express 08717 818178

www.nationalexpress.co.uk

BY LOCAL BUS:

Detailed times of all local bus services are available from Stagecoach Buses.

Stagecoach 0871 200 2233

www.stagecoachbus.com/east_kent

BY BIKE:

There is an extensive network of cycle routes throughout White Cliffs Country.

For full details visit our website.

www.whitecliffscountry.org.uk

BY CAR OR MOTORBIKE:

Both the M20 and M2 connect directly to White Cliffs Country.

CROSS CHANNEL TRAVEL:

Ferry and train crossings between Dover to Calais and Dunkirk operate on a regular basis throughout the day.

P&O Ferries 0800 130 0030

DFDS Seaways 0871 574 7235

Eurotunnel 08443 353535



Visitor Information Centres

Making the most
of your visit to
White Cliffs Country

Dover

Visitor Information Centre

T: 01304 201066

E: tic@doveruk.com

W: www.whitecliffscountry.org.uk

Deal

Visitor Information Centre

T: 01304 369576

E: info@deal.gov.uk

Sandwich

Visitor Information

Centre (Seasonal)

T: 01304 613565

E: tourism@sandwichtowncouncil.gov.uk

Photography

Photographs throughout this publication have been kindly supplied by:

Dover District Council

Clare Limbrey

Peter Kesby

Paul Wells

Ash Heritage Society

White Cliffs Countryside Partnership

Peter Smith Photography

Dover Sea Safari

National Trust

English Heritage

Visit Kent

Walt Disney Studios

This publication was designed and produced by Dover District Council, Creative Design and Tourism Departments.
Print and distribution by Catalink.

For further information:

Dover Visitor Information Centre

Dover Museum, Market Square,

Dover, Kent CT16 1PH

Tel: 01304 201066

Email: tic@doveruk.com

Web: www.whitecliffscountry.org.uk

